

# Repair Parts

116.101.AB.1

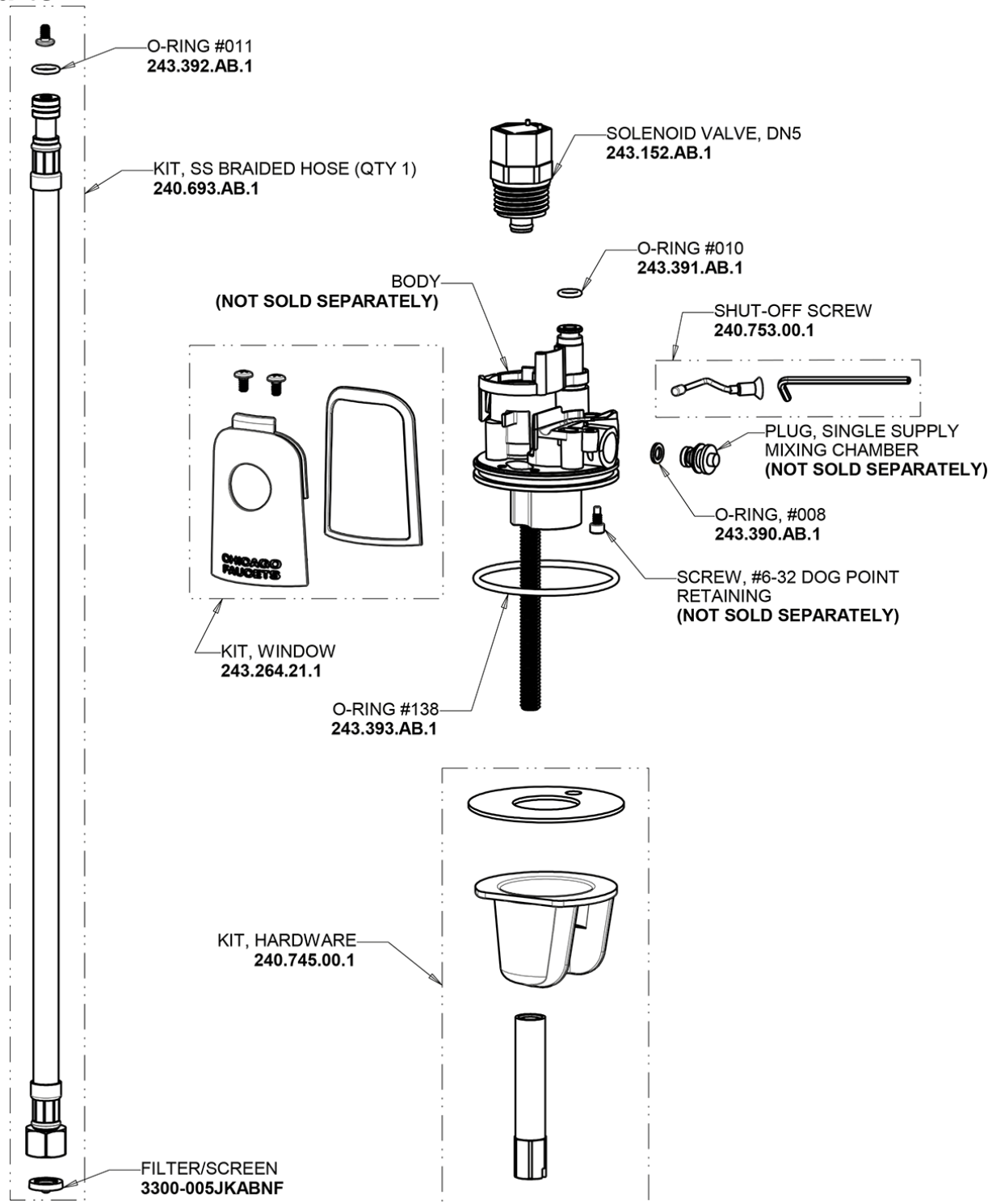
HyTronic Traditional Sink Faucet with Dual Beam Infrared Sensor

**CHICAGO  
FAUCETS**

a Geberit company

HyTronic Base, No Mixer

## Base Parts:



## For Technical Assistance:

Phone: 800-TEC-TRUE (832-8783)

Email: [techsupport.us@chicagofaucets.com](mailto:techsupport.us@chicagofaucets.com)

2100 South Clearwater Drive

Des Plaines, IL 60018

Phone: 847-803-5000

[chicagofaucets.com](http://chicagofaucets.com)

# Repair Parts

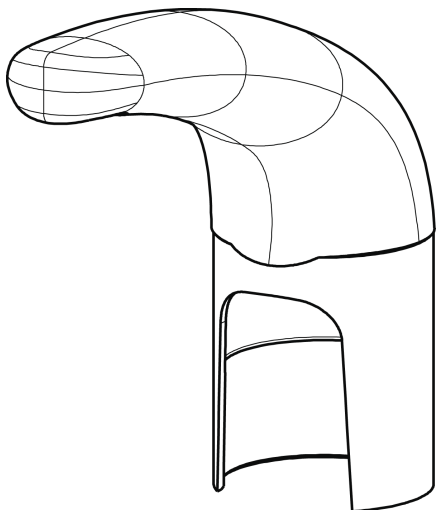
116.101.AB.1

HyTronic Traditional Sink Faucet with Dual Beam Infrared Sensor

**CHICAGO  
FAUCETS** 

a Geberit company

HyTronic Traditional Spout  
**240.724.AB.1**

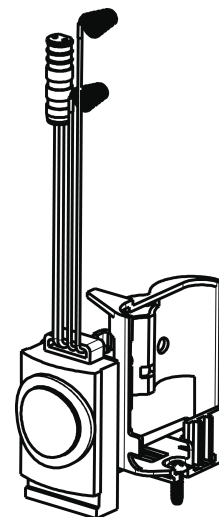


CHECK-CARTRIDGE  
**550-009KJKABNF**

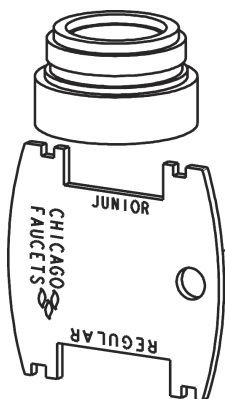
O-RING, #010  
**243.391.AB.1**



Electronic Module  
**242.433.00.1**

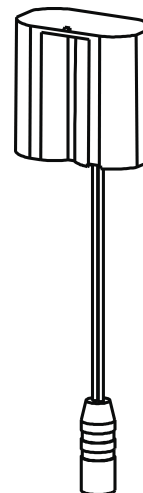


0.5 GPM (1.9 L/min) Vandal Proof Econo-Flo Non-Aerating  
Spray  
**E2805JKABCP**



VANDAL PROOF KEY  
**3-024JKRCF**

AC Power Adapter  
**240.747.00.1**



## For Technical Assistance:

Phone: 800-TEC-TRUE (832-8783)

Email: [techsupport.us@chicagofaucets.com](mailto:techsupport.us@chicagofaucets.com)

2100 South Clearwater Drive  
Des Plaines, IL 60018  
Phone: 847-803-5000  
[chicagofaucets.com](http://chicagofaucets.com)