



a Geberit company

2100 South Clearwater Drive
Des Plaines, IL 60018
Phone: 847-803-5000
Fax: 847-803-5454
www.chicagofaucets.com

REPAIR PARTS

BY: JAR DATE: 09-05-12

CHK: *[Signature]* REV: 02-19-14

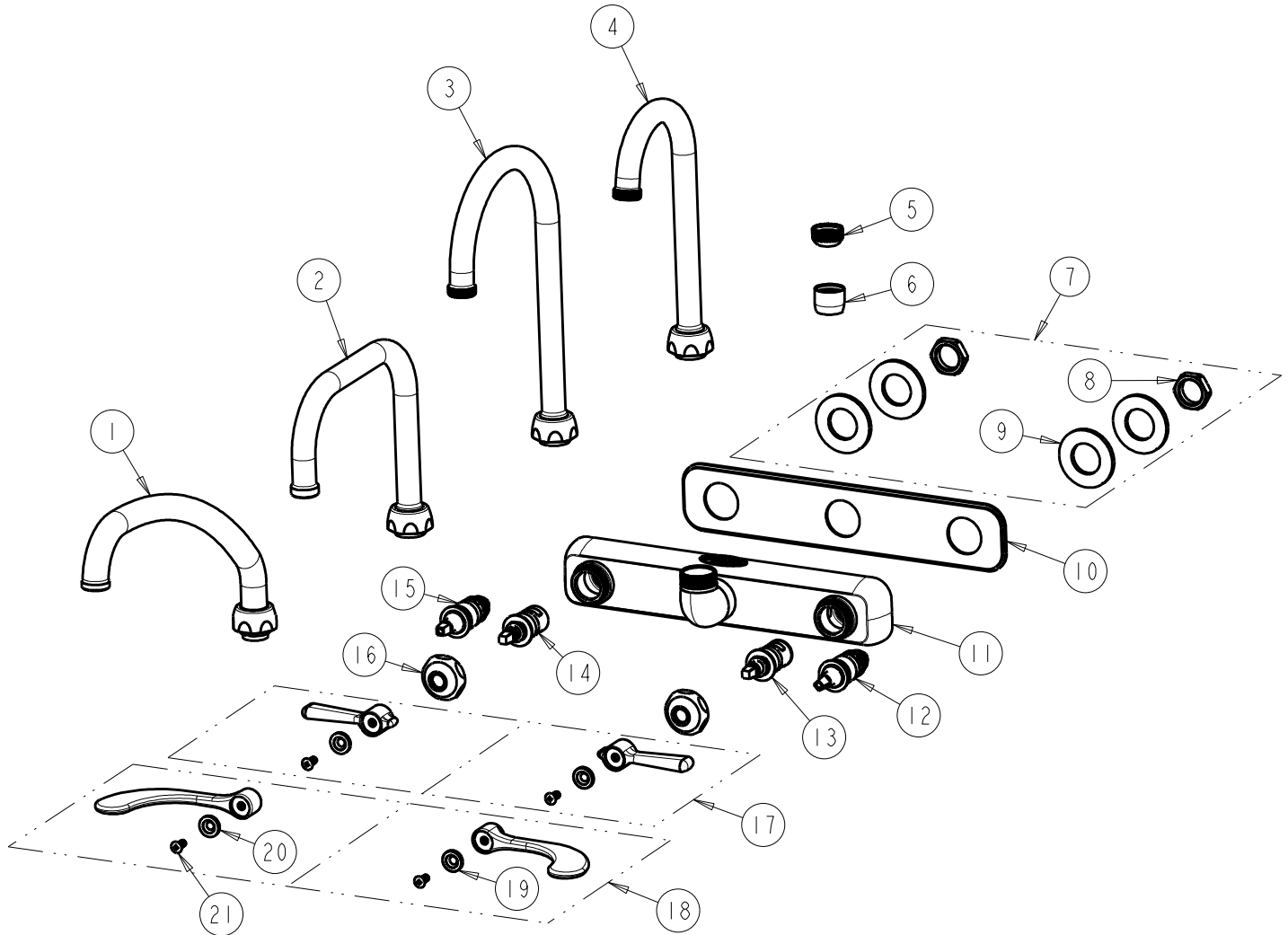
FITTING NO.

W8W

SUBMITTED MODEL NO.

ITEM NO.

FOR TECHNICAL ASSISTANCE
1-800-TEC-TRUE (1-800-832-8783)



ITEM	PART NO.	DESCRIPTION	ITEM	PART NO.	DESCRIPTION
1	L9LEOJKAB	SPOUT, 9-1/2" C-C	12	1-100XTJKABNF	QUATURN CARTRIDGE (LH)
2	DB6AJKABCP	SPOUT, DOUBLE BEND 6-1/4" C-C	13	1-100XKJKABNF	LH CERAMIC CARTRIDGE
3	GN2AJKABCP	SPOUT, GN SPOUT 5-1/4" C-C	14	1-099XKJKABNF	RH CERAMIC CARTRIDGE
4	GN1AJKABCP	SPOUT, GN SPOUT 3-1/2" C-C	15	1-099XTJKABNF	QUATURN CARTRIDGE (RH)
5	E1JKABRCF	OUTLET, QUIXTOP	16	1-214JKCP	CAP NUT
6	E35JKABCP	SOFTFLO AERATOR 1.5 GPM	17	369-PRJKCP	HANDLE, 2-3/8" LEVER (PAIR)
7	520-PPJKNF	KIT, HARDWARE	18	317-PRJKCP	HANDLE, 4" WRISTBLADE (PAIR)
8	49-004JKRBF	LOCKNUT	19	633-123JKNF	INDEX BUTTON (BLUE)
9	521-005JKNF	STEEL WASHER	20	633-023JKNF	INDEX BUTTON (RED)
10	520-003JKNF	8" DECK GASKET	21	420-010JKRCF	SCREW, 10-32 UNC PH 1/2
11	-----	NOT SOLD SEPARATELY			