



a Geberit company

2100 South Clearwater Drive
Des Plaines, IL 60018
Phone: 847-803-5000
Fax: 847-803-5454
www.chicagofaucets.com

REPAIR PARTS

BY: JAR DATE: 09-05-12

CHK: *[Signature]* REV: 02-19-14

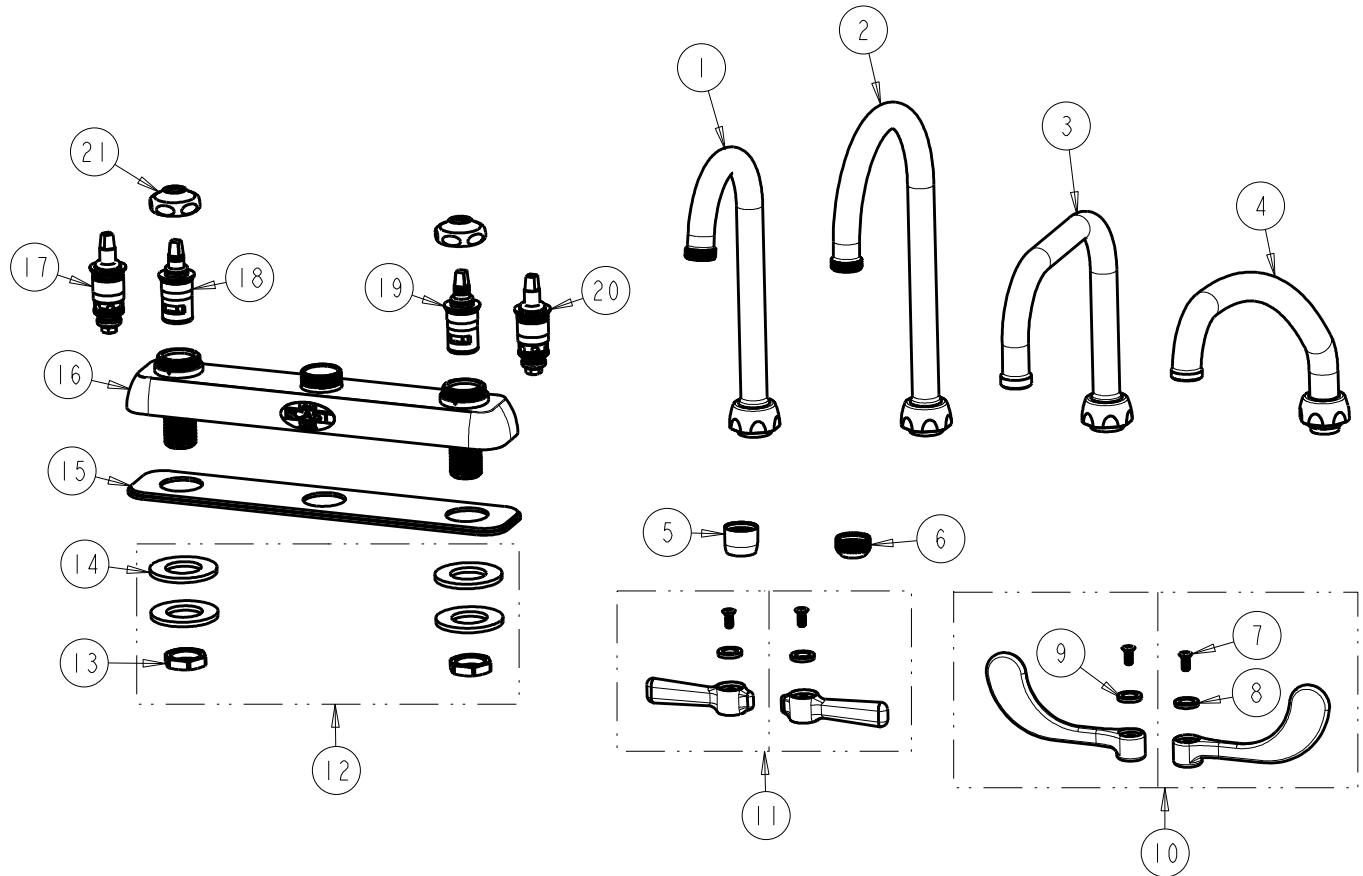
FITTING NO.

W8D

SUBMITTED MODEL NO.

ITEM NO.

FOR TECHNICAL ASSISTANCE
1-800-TEC-TRUE (1-800-832-8783)



ITEM	PART NO.	DESCRIPTION	ITEM	PART NO.	DESCRIPTION
1	GN1AJKABCP	SPOUT, GN SPOUT 3-1/2" C-C	12	520-PPJKNF	KIT, HARDWARE
2	GN2AJKABCP	SPOUT, GN SPOUT 5-1/4" C-C	13	49-004JKRBF	LOCKNUT
3	DB6AJKABCP	SPOUT, DOUBLE BEND 6-1/4" C-C	14	521-005JKNF	STEEL WASHER
4	L9LEQJ KAB	SPOUT, 9-1/2 C-C	15	520-003JKNF	8" DECK GASKET
5	E35JKABCP	SOFTFLO AERATOR 1.5 GPM	16	-----	NOT SOLD SEPARATELY
6	E1JKABRCF	OUTLET, QUIXTOP	17	1-100XTJKABNF	QUATURN CARTRIDGE (LH)
7	420-010JKRCF	SCREW, 10-32 UNC PH 1/2	18	1-100XKJKABNF	LH CERAMIC CARTRIDGE
8	633-123JKNF	INDEX BUTTON (BLUE)	19	1-099XKJKABNF	RH CERAMIC CARTRIDGE
9	633-023JKNF	INDEX BUTTON (RED)	20	1-099XTJKABNF	QUATURN CARTRIDGE (RH)
10	317-PRJKCP	HANDLE, 4" WRISTBLADE (PAIR)	21	1-214JKCP	CAP NUT
11	369-PRJKCP	HANDLE, 2-3/8" LEVER (PAIR)			