

**CHICAGO
FAUCETS**

a Geberit company

2100 South Clearwater Drive
Des Plaines, IL 60018
Phone: 847-803-5000
Fax: 847-803-5454
www.chicagofaucets.com

FOR TECHNICAL ASSISTANCE
1-800-TEC-TRUE (1-800-832-8783)

**REPAIR
PARTS**

BY: SID DATE: 10-24-11

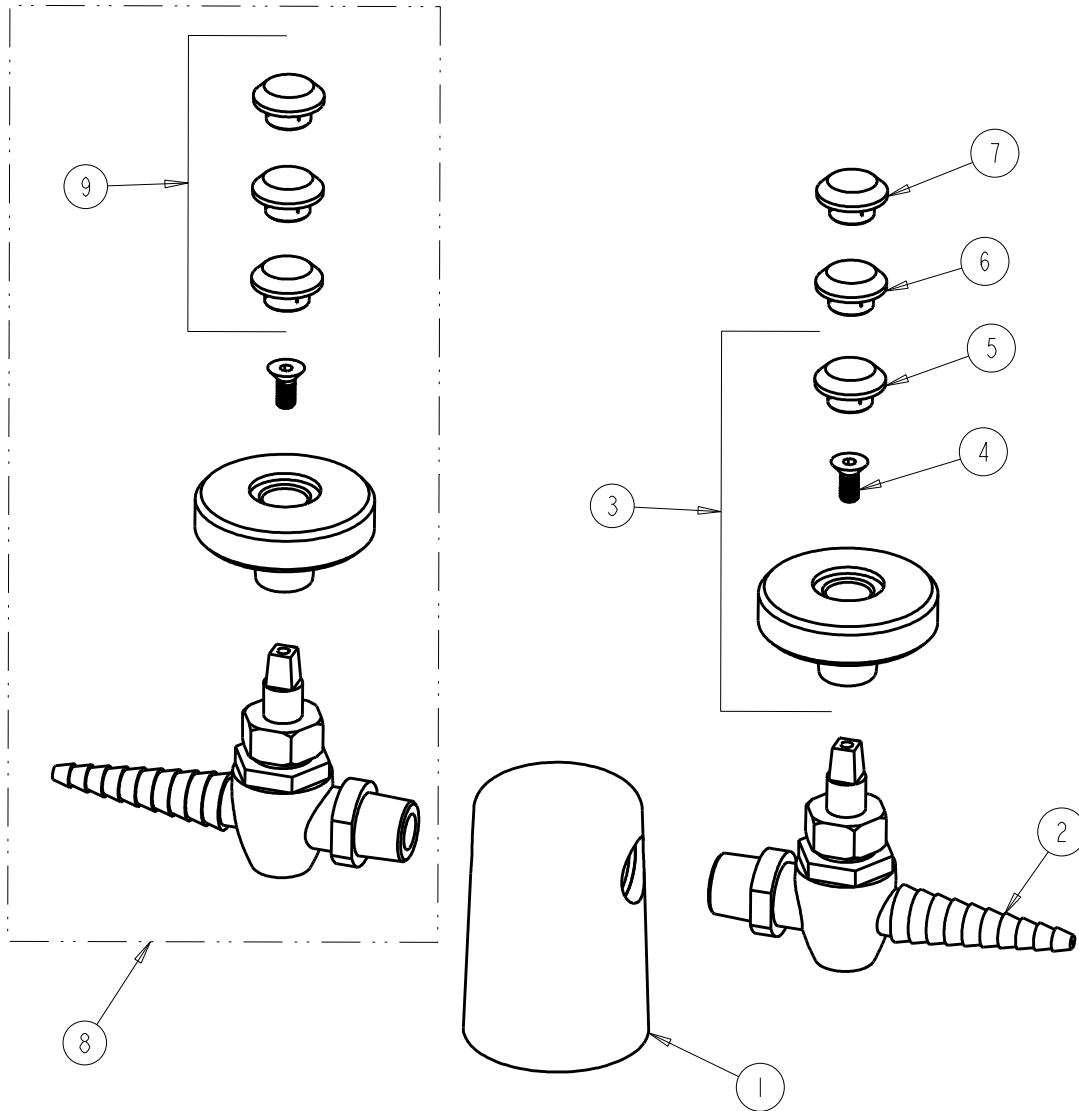
CHK: *[Signature]* REV:

FITTING NO.

981-901BAGVCP

SUBMITTED MODEL NO.

ITEM NO.



ITEM	PART NO.	DESCRIPTION	ITEM	PART NO.	DESCRIPTION
1	981-CP	TURRET, TWO OUTLETS	6	216-378JKNF	BUTTON 'VAC'
2	—	NOT SOLD SEPARATELY	7	216-278JKNF	BUTTON 'AIR'
3	945-GASJKCP	HANDLE ASSEMBLY	8	901-BAGVCP	NEEDLEPOINT VALVE
4	420-020JKNF	SCREW, 1/8 FLAT HEX HEAD X 1/2	9	216-PPNF	PRE-PACK (AIR, GAS, VAC)
5	216-328JKNF	BUTTON 'GAS'			