

**CHICAGO FAUCETS**  
a Geberit company

2100 South Clearwater Drive  
Des Plaines, IL 60018  
Phone: 847-803-5000  
Fax: 847-803-5454  
www.chicagofaucets.com

**REPAIR PARTS**

FITTING NO.  
**50-GN8AE3-317CP**

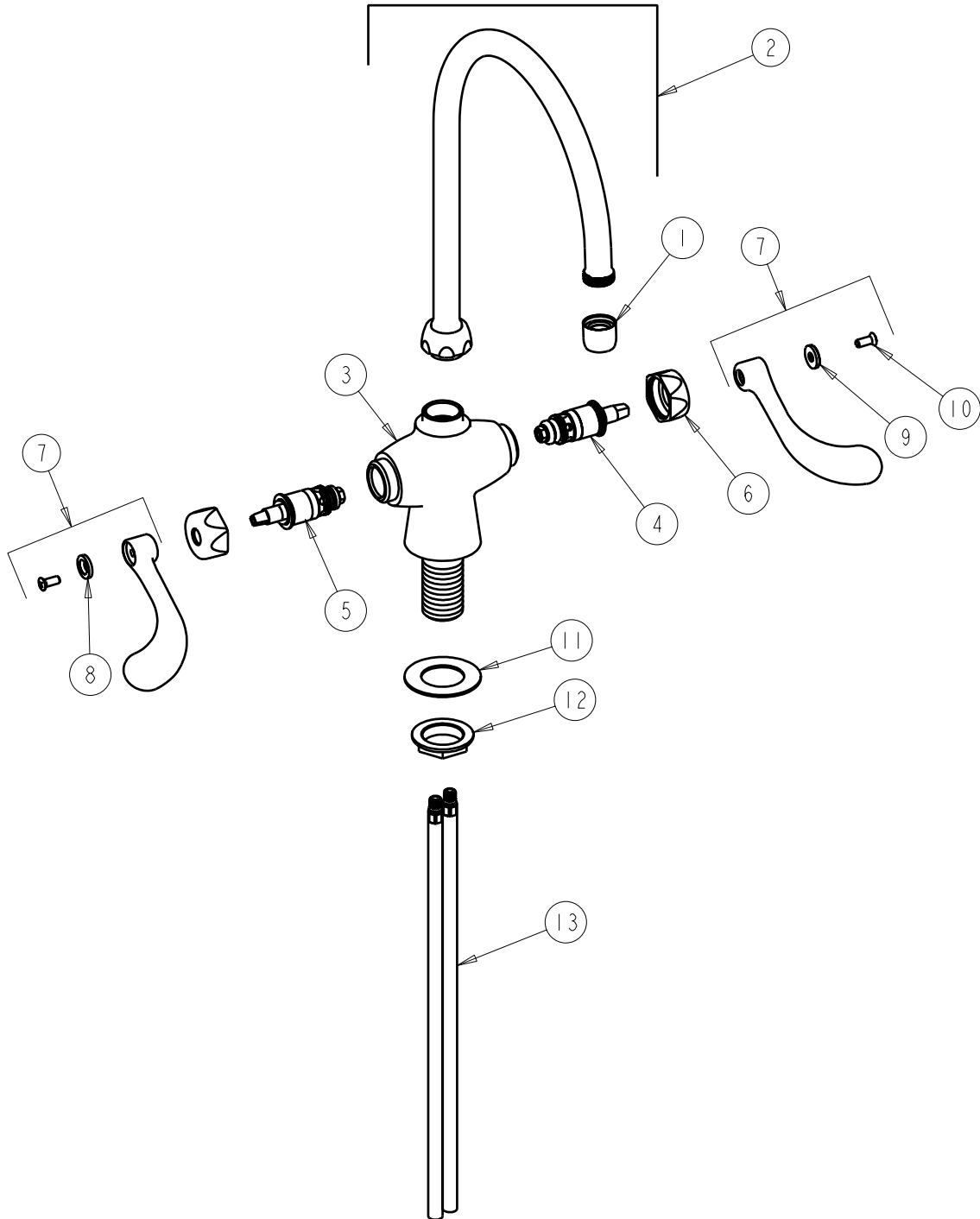
SUBMITTED MODEL NO.

BY: SID DATE: 03-10-08

CHK: REV:

ITEM NO.

**FOR TECHNICAL ASSISTANCE**  
1-800-TEC-TRUE (1-800-832-8783)



ITEM	PART NO.	DESCRIPTION	ITEM	PART NO.	DESCRIPTION
1	E3JKCP	SOFTFLO OUTLET	8	633-023JKNF	INDEX BUTTON (RED)
2	GN8AE3JKCP	FOR PARTS SEE GN8AE3JKCP	9	633-123JKNF	INDEX BUTTON (BLUE)
3	-----	VALVE BODY (NOT SOLD SEPARATELY)	10	420-010JKRCF	SCREW, 10-32 UNC PH 1/2
4	1-099XTJKNF	QUATURN UNIT (RH)	11	50-014JKNF	STEEL WASHER
5	1-100XTJKNF	QUATURN UNIT (LH)	12	50-003JKRBF	LOCKNUT
6	444-005JKCP	CAP	13	50-101KJKNF	SUPPLY TUBE ASSEMBLY
7	317-PRJKCP	WRISTBLADE HANDLE ASSY. (PAIR)			