

**CHICAGO FAUCETS**  
a Geberit company

2100 South Clearwater Drive  
Des Plaines, IL 60018  
Phone: 847-803-5000  
Fax: 847-803-5454  
www.chicagofaucets.com

# REPAIR PARTS

FITTING NO.

**50-GN1AE3CP**

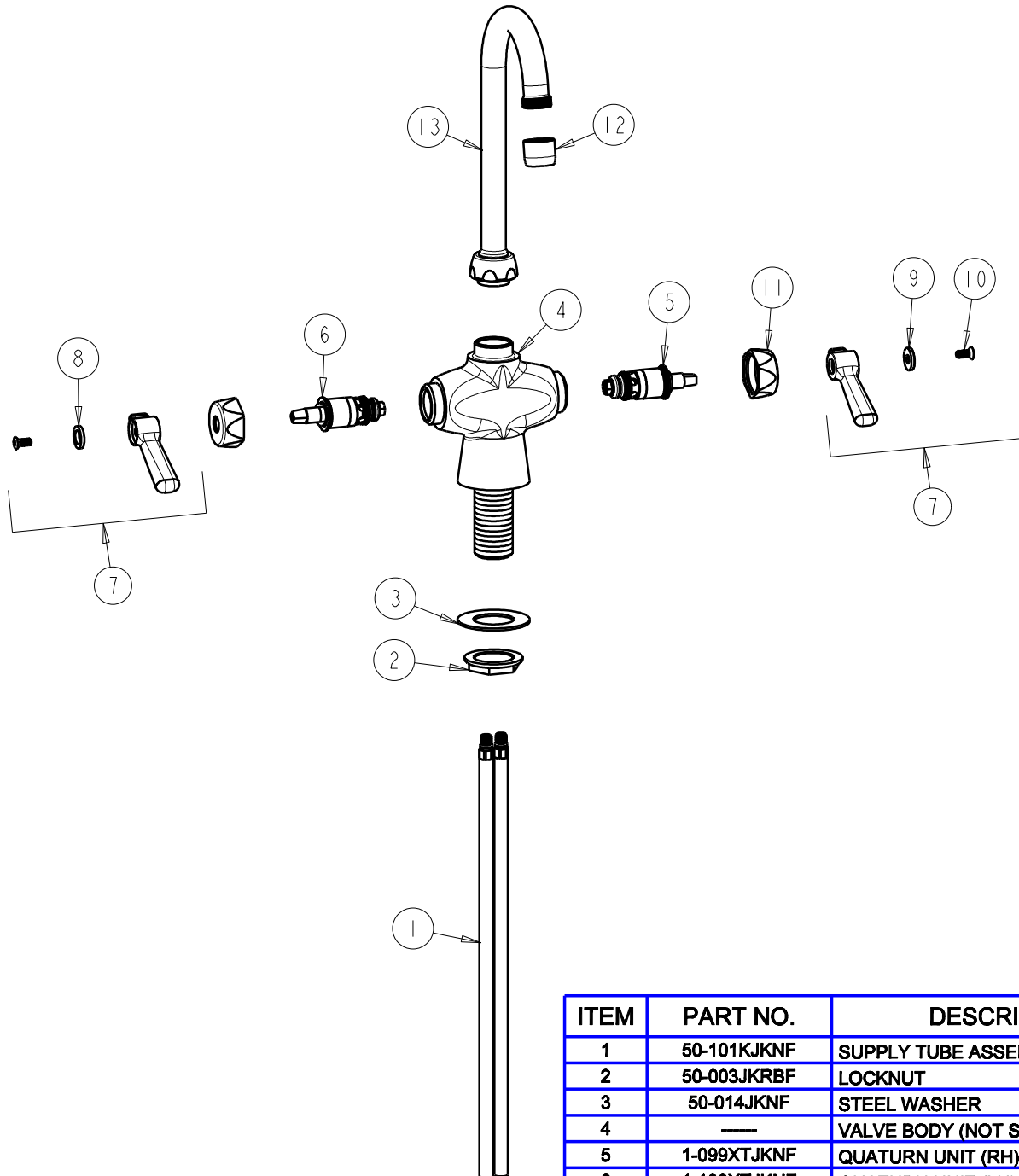
SUBMITTED MODEL NO.

ITEM NO.

BY: JAR DATE: 10-22-09

CHK: *JAR* REV:

**FOR TECHNICAL ASSISTANCE**  
**1-800-TEC-TRUE (1-800-832-8783)**



ITEM	PART NO.	DESCRIPTION
1	50-101KJKNF	SUPPLY TUBE ASSEMBLY
2	50-003JKRBF	LOCKNUT
3	50-014JKNF	STEEL WASHER
4	—	VALVE BODY (NOT SOLD SEPARATELY)
5	1-099XTJKNF	QUATURN UNIT (RH)
6	1-100XTJKNF	QUATURN UNIT (LH)
7	369-PRJKCP	LEVER HANDLE ASSEMBLY (PAIR)
8	633-023JKNF	INDEX BUTTON (RED)
9	633-123JKNF	INDEX BUTTON (BLUE)
10	420-010JKRCF	SCREW, 10-32 UNC PH 1/2
11	444-005JKCP	CAP
12	E3JKCP	SOFTFLO AERATOR OUTLET
13	GN1AJKCP	FOR PARTS SEE GN1AE3JKCP