

CHICAGO FAUCETS
a Geberit company

2100 South Clearwater Drive
Des Plaines, IL 60018
Phone: 847-803-5000
Fax: 847-803-5454
www.chicagofaucets.com

REPAIR PARTS

FITTING NO.

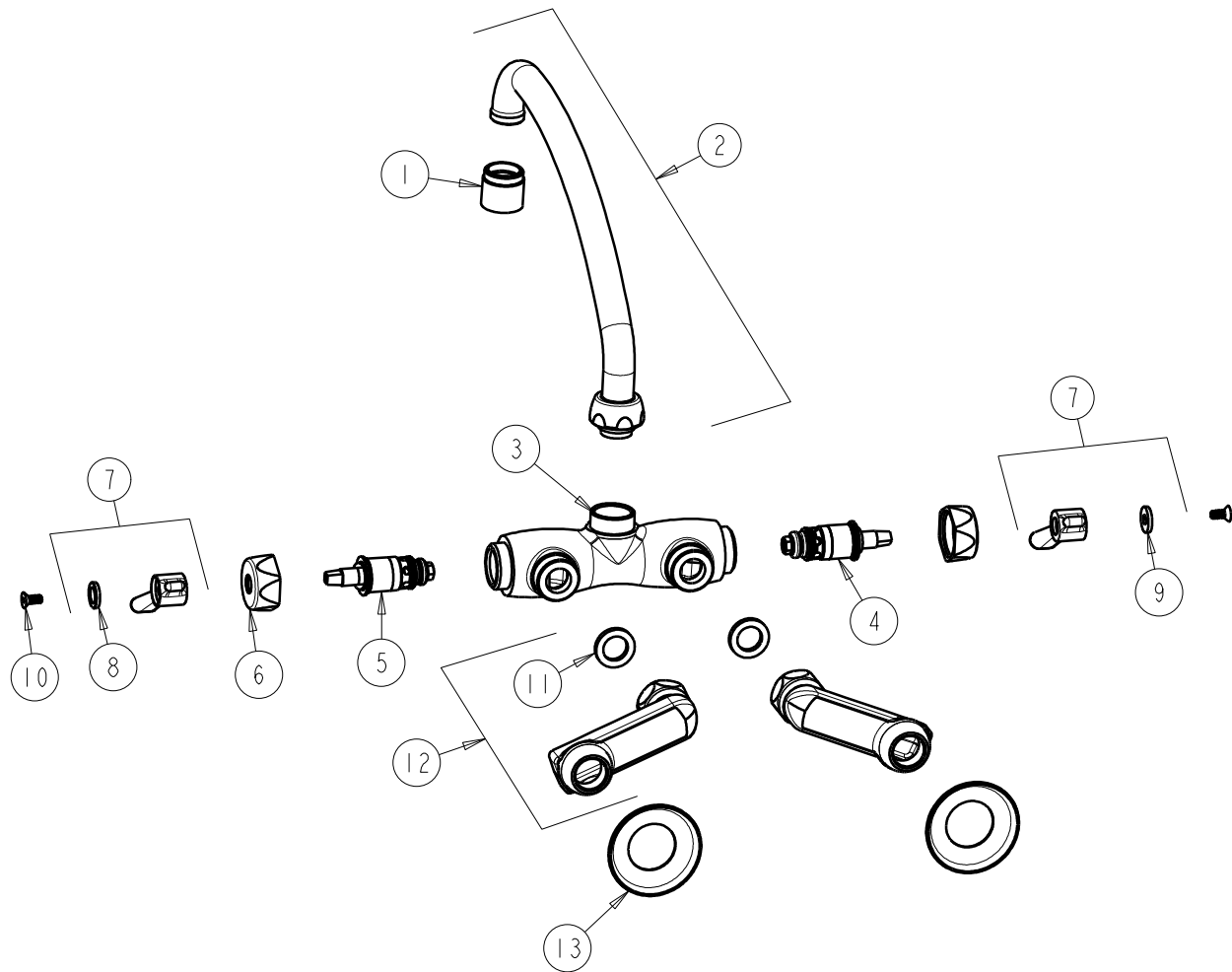
445-L9VPCCP

SUBMITTED MODEL NO.

ITEM NO.

FOR TECHNICAL ASSISTANCE
1-800-TEC-TRUE (1-800-832-8783)

BY: JAR DATE: 09-29-09
CHK: *[Signature]* REV:



ITEM	PART NO.	DESCRIPTION
1	E3VPJKCP	V.R. SOFTFLO AERATOR W/ V.R. KEY
2	L9E3VPJKCP	FOR PARTS SEE L9E3VPJKCP
3	---	VALVE BODY (NOT SOLD SEPARATELY)
4	1-100XTJKNF	QUATURN UNIT (LH)
5	1-099XTJKNF	QUATURN UNIT (RH)
6	444-005JKCP	CAP
7	369-PRJKCP	LEVER HANDLE ASSEMBLY (PAIR)
8	633-123JKNF	INDEX BUTTON (BLUE)
9	633-023JKNF	INDEX BUTTON (RED)
10	420-020JKNF	SCREW, 1/8 FLAT HEX HEAD X 1/2
11	1-011JKNF	WASHER, .97 X .62 X .12
12	HJKCP	'H' ARM ASSEMBLY w/WASHER
13	1-055JKCP	FLANGE