



a Geberit company

2100 South Clearwater Drive  
Des Plaines, IL 60018  
Phone: 847-803-5000  
Fax: 847-803-5454  
www.chicagofaucets.com

**FOR TECHNICAL ASSISTANCE**  
1-800-TEC-TRUE (1-800-832-8783)

# REPAIR PARTS

BY: JAR DATE: 11-26-07

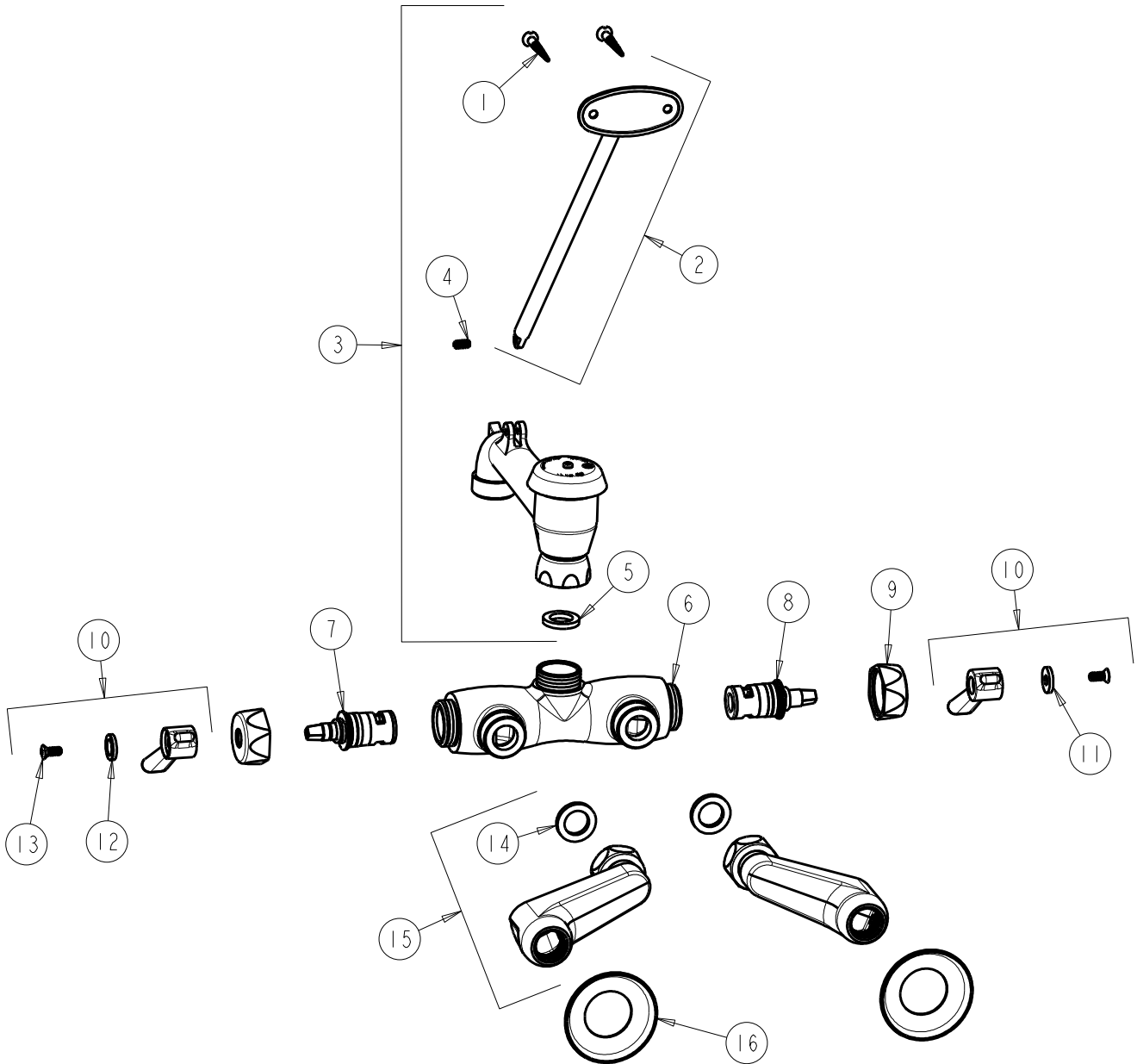
CHK: *JAR* REV: 02-25-14

FITTING NO.

445-897SRCXKCP

SUBMITTED MODEL NO.

ITEM NO.



ITEM	PART NO.	DESCRIPTION	ITEM	PART NO.	DESCRIPTION
1	173-006JKCP	FLAT HEAD WOOD SCREW	9	444-005JKCP	CAP
2	897-018JKCP	BRACE ROD ASSEMBLY 12"	10	369-PRJKCP	HANDLE, 2-3/8" LEVER (PAIR)
3	897-SJKCP	VB SPOUT w/ BRACE ROD	11	633-023JKNF	INDEX BUTTON (RED)
4	665-116JKNF	SET SCREW	12	633-123JKNF	INDEX BUTTON (BLUE)
5	340-004JKABNF	CELCON WASHER	13	420-010JKRCF	SCREW, 10-32 UNC PH 1/2
6	-----	VALVE BODY (NOT SOLD SEPARATELY)	14	1-011JKABNF	WASHER, .97 X .62 X .12
7	1-099XKJKABNF	RH CERAMIC CARTRIDGE 1/4	15	RCJKABCP	ARM W/ BUILT-IN SHUT-OFF & CHECK
8	1-100XKJKABNF	LH CERAMIC CARTRIDGE 1/4	16	1-055JKCP	FLANGE