

**CHICAGO FAUCETS**  
a Geberit company

2100 South Clearwater Drive  
Des Plaines, IL 60018  
Phone: 847-803-5000  
Fax: 847-803-5454  
www.chicagofaucets.com

**REPAIR PARTS**

BY: JAR DATE: 11-29-07

CHK: *[Signature]* REV:

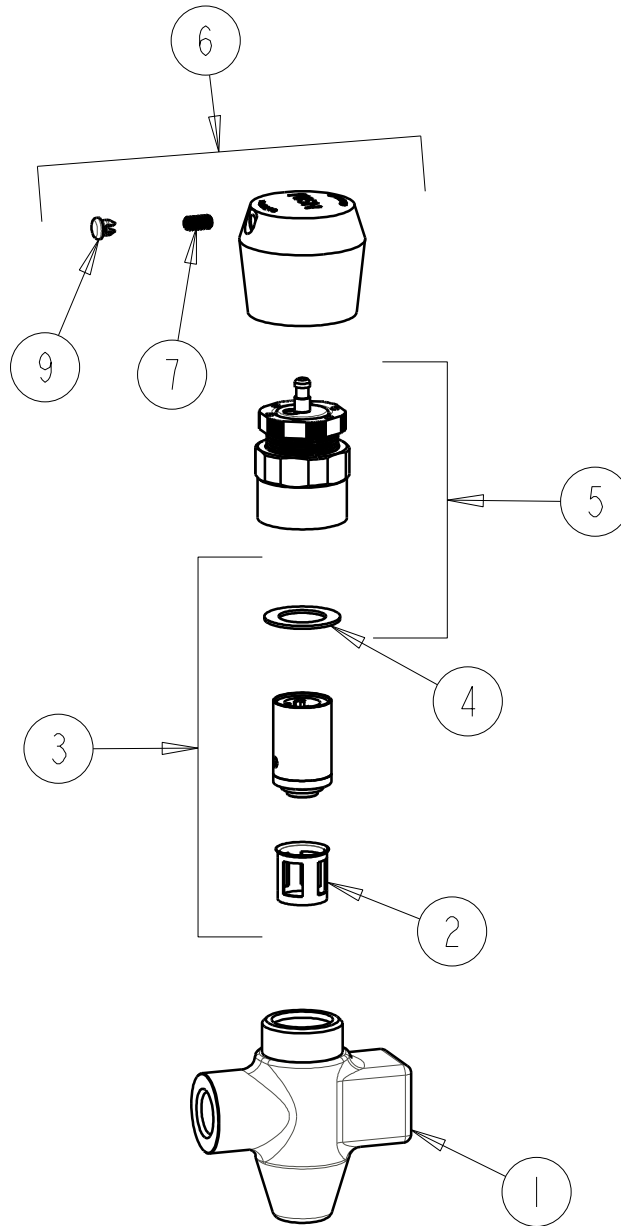
FITTING NO.

**339-665PSHCP**

SUBMITTED MODEL NO.

ITEM NO.

**FOR TECHNICAL ASSISTANCE**  
1-800-TEC-TRUE (1-800-832-8783)



ITEM	PART NO.	DESCRIPTION
1	---	VALVE BODY (NOT SOLD SEPARATELY)
2	667-402JKNF	FILTER
3	671-XJKNF	MVP CARTRIDGE
4	665-011JKNF	WASHER, SEALING
5	665-190KJKNF	ACTUATOR ASSEMBLY
6	665-PSHJKCP	HANDLE PUSH BUTTON ASSEMBLY
7	665-116JKNF	SET SCREW
9	665-309KJKNF	RED & BLUE BUTTONS